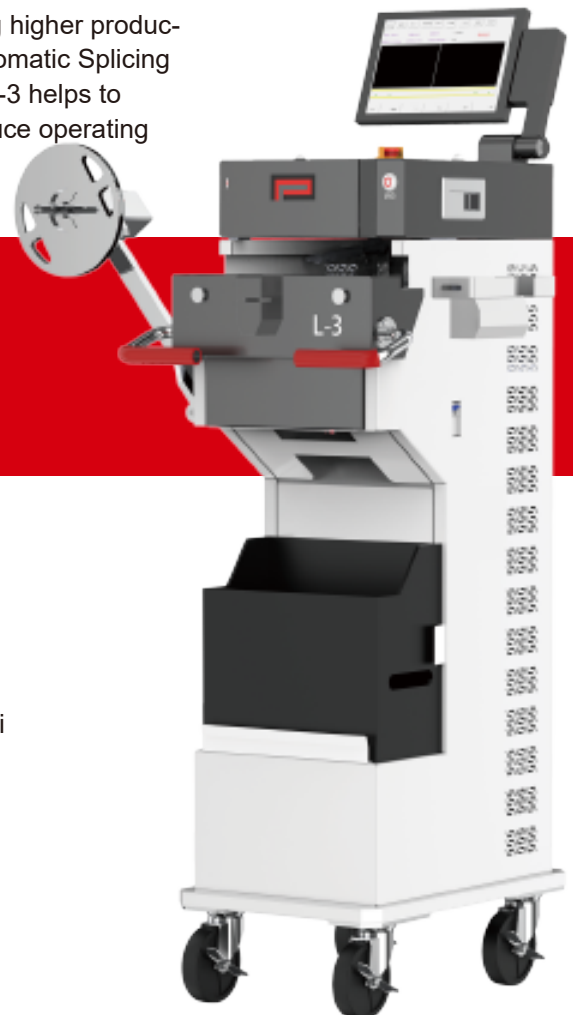


SMT AUTO SPLICING SYSTEM

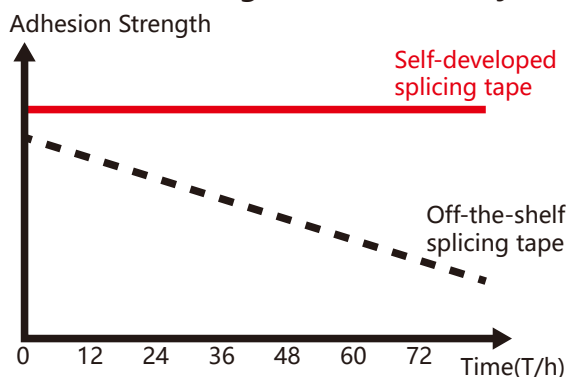
The automation of the SMT industry continues to evolve. Today the topic of managing operations systematically and integrating traceability information to the MES (Manufacturing Execution System) has become crucial in achieving higher productivity within today's SMT factories. Youngpool Technology's L-3 Automatic Splicing Machine has been developed as a solution to this challenge. The L-3 helps to improve outgoing quality, enhance management via MES, and reduce operating cost.

L-3

- Dedicated 8mm carrier tape splicing (01005 capable)
- Carrier tape thickness 0.25–1.4mm (paper) and 0.25-2.5mm (embossed) applicable
- Battery can support 12-16 hours of continuous operation
- First Pass Yield at 98% or above
- Capable for MES integration, connectivity via Bluetooth and Wi-Fi
- Validation function available in both stand-alone and online mode
- Empty-pocket detection using vision inspection
- Power-assisted wheels to facilitate movement
- Ergonomic design for ease of use



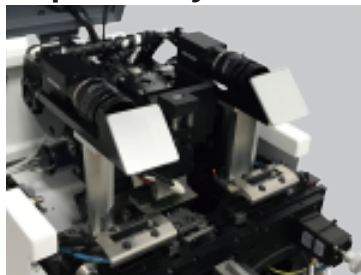
Adhesion strength and durability



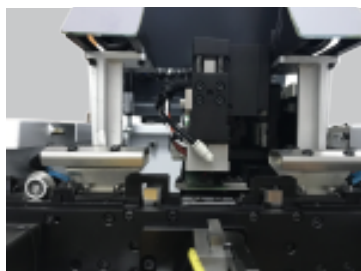
Empty-pocket detection



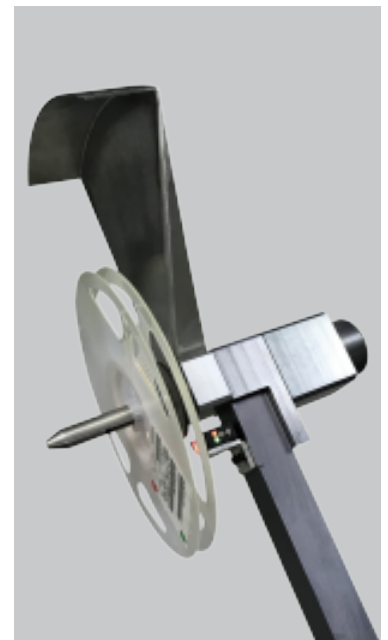
Carrier Tape Vision Inspection System



Proprietary bond head



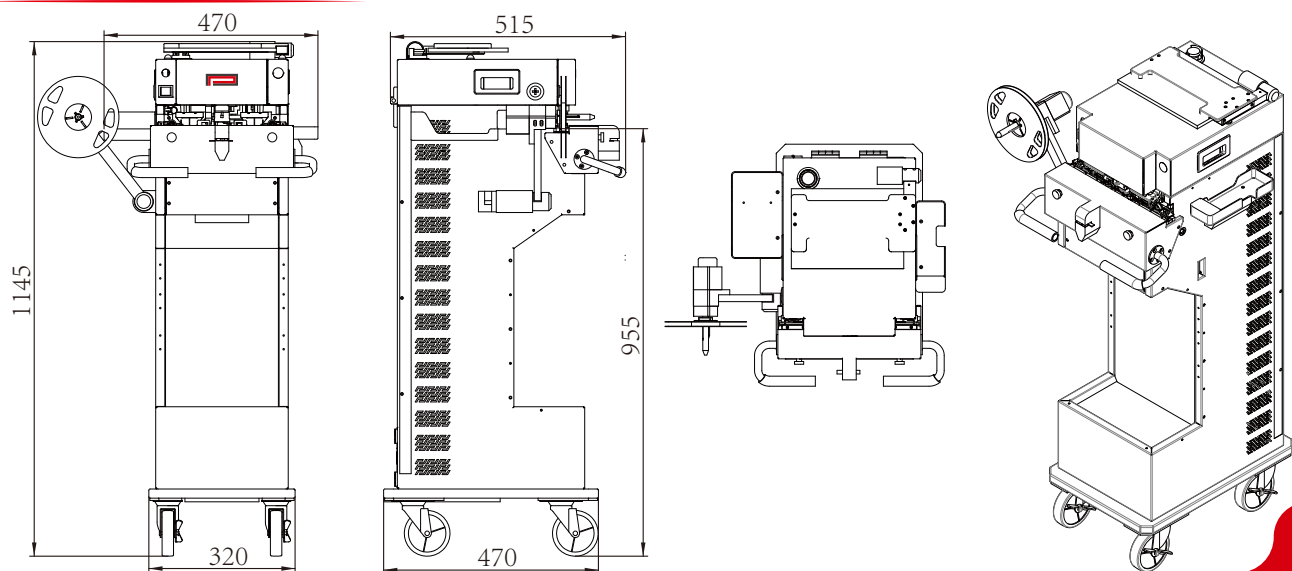
Rewinder with sensors



TECHNICAL SPECIFICATIONS

Facilities Requirements	Machine Dimension (mm)	470(W) × 515(L) × 1145(H)
	Weight (kg)	65
	Safety	Fully enclosed design with safety interlock switches
Conveyor	Component Height (mm)	955
Power Supply	Power Source	60Ah Battery
	Operation Time (when fully charged)	12-16h
	Charging Voltage	24V DC
	Power	100W
Motion System	Repeatability (mm)	0.1
	Positioning accuracy (mm)	±0.2
Carrier Tape	Automatic Width Adjustment(mm)	8
	Minimum Length for Splicing(mm)	140
Component Reel	Motorized Winder	Standard Configuration
	Reel Size (mm)	≤φ380 (please consult your sales agent for special requirements)
Splicing Rate	Cycle Time (sec)	≤7.2S (not including loading time)
Software and Programming	Control	Computer Control
	Operating System	Windows Interface
	Communication with MES	Customizable
	Available Information	Barcode Information, Battery Level, Alarms, Settings, Splicing Records
Options and Accessories	Carrier Tape Vision Inspection System	Available as Option
	Power-assisted Wheels	Available as Option
	AGV version	Available as Option (please consult your sales agent)
	Label Printer	Available as Option
	Barcode Scanner	Standard Configuration
	Automatic cutter for pre-cut	Standard Configuration
Extension Port	USB2.0	Standard Configuration

DIMENSIONS



Youngpool Technology Co.,Ltd

SZ Tel: +86 755 2782 3996 Fax: +86 755 2782 3995
Add: 3F,Building 17, Cuigang District 3, Fuyong Huaide,
Baoan District,Shenzhen

<http://www.ypoolsmt.com>

HK Tel: +852 2668 1868 Fax: +852 2668 1899
Add: Room 803,Chevalier House,45~51 Chatham
Road South,Tsim Sha Tsui,Kowloon,Hong Kong

- Published in July 2021 , All Rights Reserved
- All specifications are subject to change as a result of technical developments or advances. For questions on our products, please contact Youngpool Technonlogy (information@youngpool.com) or our local representative(s)

