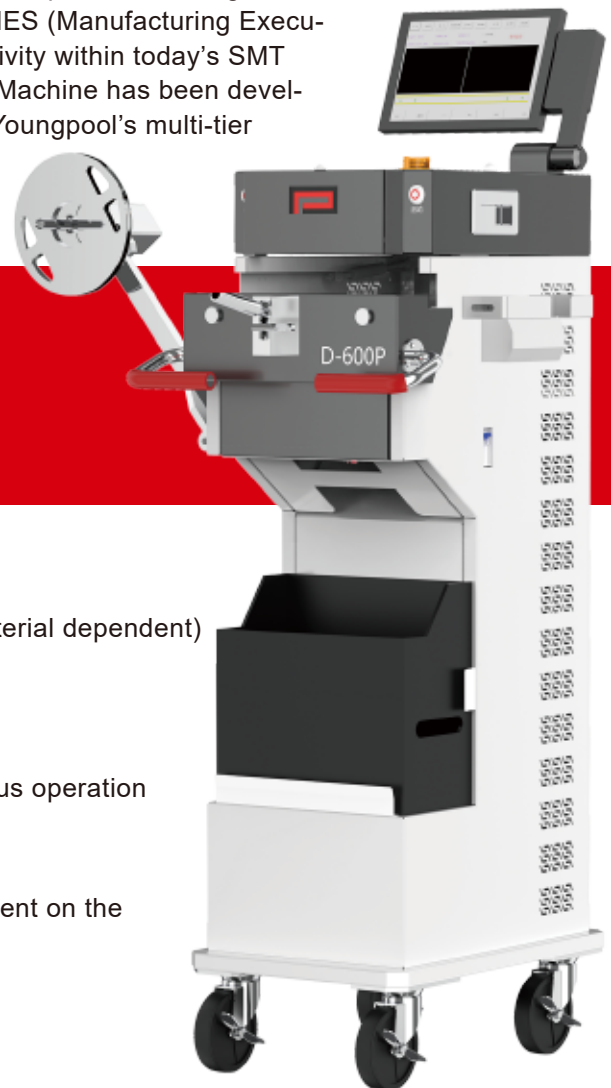


SMT AUTO SPLICING SYSTEM

The automation of SMT industry continues to evolve. Today the topics of reducing operating cost and integrating traceability information to the MES (Manufacturing Execution System) have becomg crucial in achieving higher productivity within today's SMT factories.Youngpool Technology's D-600P Automatic Splicing Machine has been developed as an economic solution to this challenge, it completes Youngpool's multi-tier product portfolio on automatic splicing.

D-600P

- Compact Size
- Paper and plastic (embossed) tapes applicable
- Applicable carrier tape thickness : 0.25 - 2.5mm (carrier material dependent)
- Continuous operation for up to 16 hours once fully charged
- Up to 98% FPY
- Bluetooth and Wi-Fi connectivity to the factory MES
- One roll of splice tape contains 1500 pcs, ideal for continuous operation
- Optional label printer to facilitate material management
- Lightweight design for ease of use
- Power-assisted (motor powered) wheels to facilitate movement on the shop floor

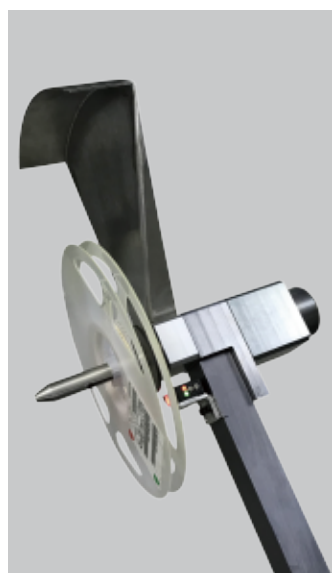
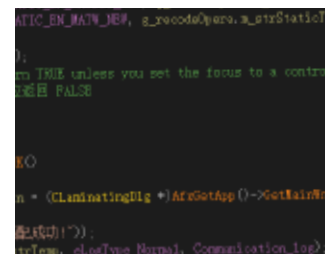


Illustrations of Automatic Splicing System

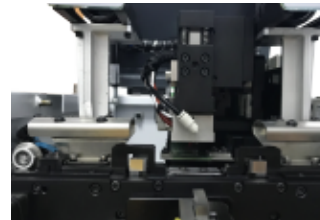
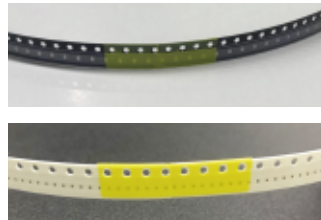
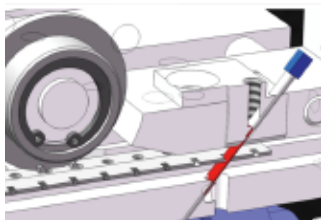
Barcode validation



Rewinder with sensors



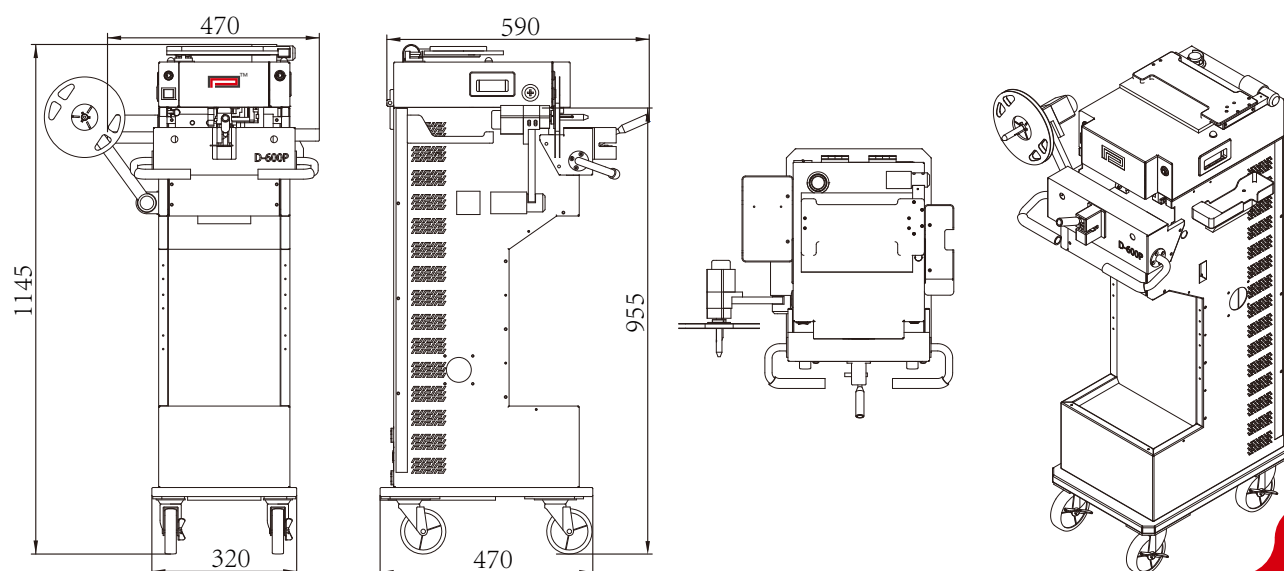
Proprietary placement head



TECHNICAL SPECIFICATIONS

Facilities Requirements	Machine Dimension (mm)	470(W) × 590(D) × 1145(H)
	Weight (kg)	65
	Safety	Fully enclosed design with safety interlock switches to protect operator
Conveyor	Component Height (mm)	955
Power Supply	Power Source	60Ah Battery
	Operation Time (when fully charged)	12-16h
	Charging Voltage	24V DC
	Power	100W
Motion System	Repeatability (mm)	0.1
	Positioning accuracy of splicing tape (mm)	±0.2
Carrier Tape	Width(mm)	8
	Minimum Length for Splicing(mm)	140
Component Reel	Motorized Winder	Standard Configuration
	Reel Size (mm)	≤φ380 (consult Youngpool for special requirements)
Splicing Rate	Cycle Time (sec)	≤7.2S (not including loading time)
Software and Programming	Control	Computer Control
	Operating System	Windows Interface
	Communication with MES	Customizable
	Available Information	Barcode Information, Battery Level, Alarms, Parameter Settings, Splicing Records
Options and Accessories	Power-assisted Wheels	Available as Option
	Splice Clips / Shims	Available as Option
	Label Printer	Available as Option
	Barcode Scanner	Standard Configuration
	Manual cutter for pre-cut	Standard Configuration
Extension Port	USB2.0	Standard Configuration

DIMENSIONS



Shenzhen Youngpool Technology Co.,Ltd <http://www.youngpool.com>

SZ Tel: +86 755 2782 3996 Fax: +86 755 2782 3995
Add: 5F,Building 6, Cuigang District 3, Fuyong Huaide,
Baoan District,Shenzhen

HK Tel: +852 2668 1868 Fax: +852 2668 1899
Add: Room 803,Chevalier House,45~51 Chatham
Road South,Tsim Sha Tsui,Kowloon,Hong Kong

- Published in July 2021 , All Rights Reserved
- All specifications are subject to change as a result of technical developments or advances. For questions on our products, please contact Youngpool Technonlogy (information@youngpool.com) or our local representative(s)

